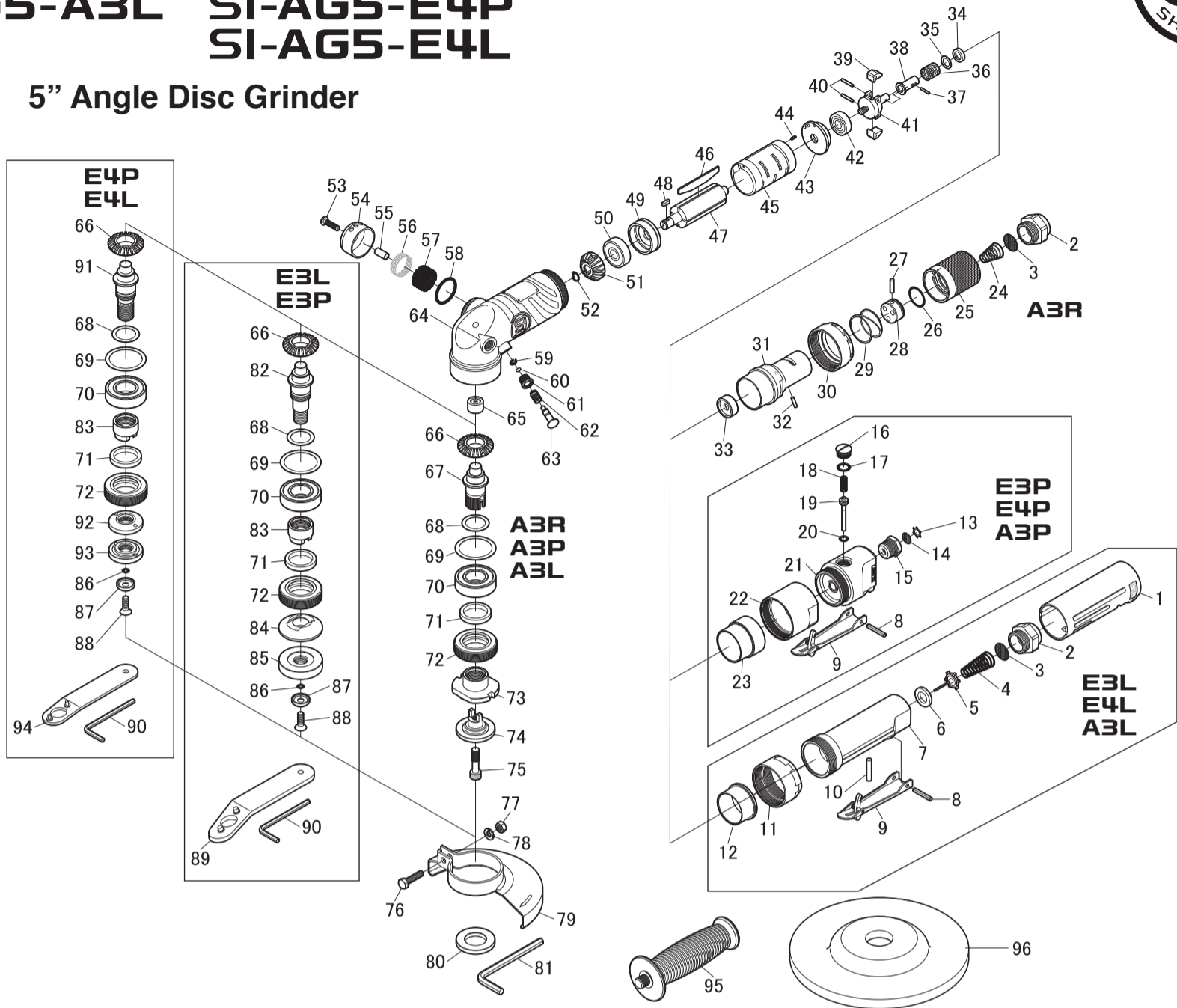


SI-AG5-A3R  
SI-AG5-A3P  
SI-AG5-A3L

SI-AG5-E3P  
SI-AG5-E3L  
SI-AG5-E4P  
SI-AG5-E4L



5" Angle Disc Grinder



Ref. No.	Parts No.	Description	Q'ty	Ref. No.	Parts No.	Description	Q'ty	Ref. No.	Parts No.	Description	Q'ty
<b>AG5-E3L, AG5-E4L, AG5-A3L</b>				<b>AG5-A3R, AG5-A3P, AG5-A3L</b>				<b>COMMON PARTS</b>			
1	242SIL-4	Grip Cover	1	66	246-5-2	Bevel Gear	1	34	242-31	Governor Valve Spring Holder	1
2	242-6	Bushing	1	67	246-3	Spindle(M8-1.25)	1	35A	242-32A	Shim(0.2mm)	★
3	2011AC-9	Screen	1	68A	242-19A	Shim(0.2mm)	★	35B	242-32B	Shim(0.3mm)	
4	242SIL-10	Valve Spring	1	68B	242-19B	Shim(0.3mm)		35C	242-32C	Shim(0.5mm)	
5	966-11	Valve	1	68C	242-19C	Shim(0.5mm)		36	630-19	Governor Spring	1
6	1071C-20	Valve Seat	1	69	244-4	Washer	1	37	242-33	Needle Pin	1
7	244-13	Governor Case incl. Bush (242SIL-11)	1	70	6004ZZNSK	Ball Bearing	1	38	242-29	Governor Valve	1
8	40-25	Roll Pin(4ø-25mm)	1	71	242-18	Felt Ring	1	39	242-27	Governor Weight	2
9	242SIL-7	Throttle Lever	1	72	244-3	Spindle Nut	1	40	2500-15-8	Needle Roller	2
10	242SIL-13	Valve Pin	1	73	246-5-4	Disc Receiver	1	41	630-17	Governor Housing	1
11	246-14	Lock Ring	1	74	246-5-5	Disc Nut	1	42	609ZZNSK	Ball Bearing	1
12	244-14	Collar	1	75	244-5	Cap Screw	1	43	630-16A	Rear Plate	1
<b>AG5-E3P, AG5-E4P, AG5-A3P</b>				80	242SIL-23	Cut Off Attachment	1	44	20-6	Roll Pin(2ø-6mm)	1
8	40-25	Roll Pin(4ø-25mm)	1	81	WRA-6	6mm Allen Wrench	1	45	246-6B	Cylinder	1
9	242SIL-7	Throttle Lever	1	<b>AG5-E3L, AG5-E3P</b>				46	246-8	Rotor Blade	4
13	CRTW-12	Retainer	1	66	246-5-2	Bevel Gear	1	47	246-7	Rotor	1
14	680-28A	Screen	1	68A	242-19A	Shim(0.2mm)	★	48	630-11	Key	1
15	670-22	Inlet Bushing	1	68B	242-19B	Shim(0.3mm)		49	630-12A	Front Plate	1
16	230-68	Valve Screw	1	68C	242-19C	Shim(0.5mm)		50	6200ZZNSK	Ball Bearing	1
17	P-10	O-Ring	1	69	244-4	Washer	1	51	246-5-3	Pinion Gear	1
18	450-24	Valve Spring	1	70	6004ZZNSK	Ball Bearing	1	52	244-12	Retainer Ring	1
19	630SIL-6	Valve Pin	1	71	242-18	Felt Ring	1	53	AZM50--200	Cap Screw	1
20	P-6	O-Ring	1	72	244-3	Spindle Nut	1	54	246-4	Deflector	1
21	630SIL-4	Valve Housing incl. Governor Collar (630SIL-5) & Bush (280-67)	1	82	246PL-4	Spindle(M14-2)	1	55	242SIL-12	Collar	1
22	246-2	Lock Ring	1	83	246PL-3	Disc Receiver	1	56	246-15	Exhaust Screen	1
23	630SIL-3	Collar	1	84	241-14-1A	Disc Receiver	1	57	246-11	Muffler	1
<b>AG5-A3R</b>				85	241-14-2A	Disc Nut	1	58	S-26	O-Ring	1
2	242-6	Bushing	1	86	2011AC-56	O-Ring	1	59	2011AC-94A	Retaining Ring	1
3	2011AC-9	Screen	1	87	2011AC-55A	Washer	1	60	2011AC-106	O-Ring	1
24	242-36	Throttle Valve Spring	1	88	Y-M60--180	Counter Sink	1	61	2011AC-92A	Lock Pin Nut	1
25	246-10	Valve Ring	1	89	510-2	Pin Wrench (5øx30mm)	1	62	2011AC-95A	Spring	1
26	S-20	O-Ring	1	90	WRA-4	4mm Allen Wrench	1	63	244-16	Lock Pin	1
27	242-38	Roll Pin	1	<b>AG5-E4P, AG5-E4L</b>				64	246-1	Motor Housing	1
28	242-34	Throttle Valve	1	66	246-5-2	Bevel Gear	1	65	BK1210	Needle Bearing	1
29	242-35	Throttle Valve Handle Spring	1	68A	242-19A	Shim(0.2mm)	★	76	W-M60--250	Bolt	1
30	630-24	Motor Lock Nut	1	68B	242-19B	Shim(0.3mm)		77	N2-M60	Nut	1
31	246-5	Governor Case	1	68C	242-19C	Shim(0.5mm)		78	HSW-60	Washer	1
32	310-19	Planet Pin	1	69	244-4	Washer	1	79	246-5-7	Disc Cover	1
33	246-5A	Governor Bush	1	70	6004ZZNSK	Ball Bearing	1	95	242SIL-20	Anti Vibration Handle	1
				71	242-18	Felt Ring	1	96	241-49E	5" Disc	1
				72	244-3	Spindle Nut	1				
				83	246PL-3	Disc Receiver	1				
				86	2011AC-56	O-Ring	1				
				87	2011AC-55A	Washer	1				
				88	Y-M60--180	Counter Sink	1				
				90	WRA-4	4mm Allen Wrench	1				
				91	246-5-8	Spindle(5/8-11UNC)	1				
				92	240B-4	Disc Receiver	1				
				93	240B-5	Disc Nut	1				
				94	240B-7	Pin Wrench 5/8"	1				