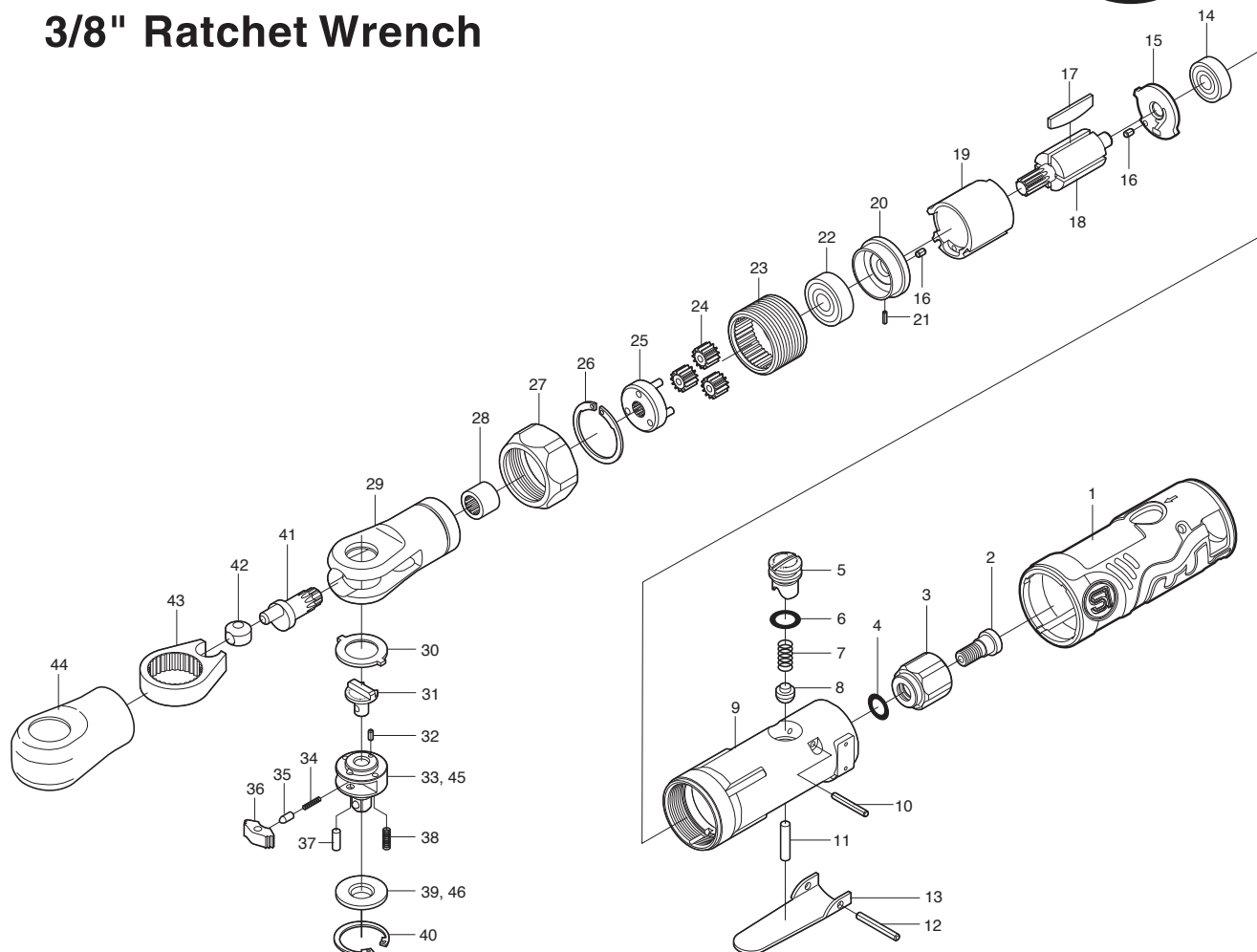


SI-1217EX 1/4" Ratchet Wrench

SI-1218EX 3/8" Ratchet Wrench



Ref. No.	Parts No.	Description	Q'ty	Ref. No.	Parts No.	Description	Q'ty
1	310G-2SI	Housing Cover	1	24	310-12	Planet Gear	3
2	310G-4B	Retaining Screw	1	25	310-2	Planet Cage incl. Planet Pins(310-19x3)	1
3	310G-3	Inlet Bushing	1	26	GV-24	Retaining Ring	1
4	P-8	O-Ring	1	27	1091C-17	Lock Ring	1
5	310KD-5	Air Regulator	1	28	HK0910	Needle Bearing	1
6	S-9	O-Ring	1	29	310D-2	Ratchet Housing	1
7	670-49	Valve Spring	1	30	310-5A	Washer	1
8	300-10	Valve	1	31	310S-17	Reverse Lever	1
9	310G-1A	Motor Housing incl. Bush(310-1S)	1	32	20-5	Roll Pin(2ø-5mm)	1
10	25-20	Roll Pin(2.5ø-20mm)	1	☆ 33	310MT-10	1/4" Sq. Anvil	1
11	310-4S	Valve Pin	1	34	310-34	Reverse Spring	1
12	30-24	Roll Pin(3ø-24mm)	1	35	310-16	Reverse Pin	1
13	312-12T	Throttle Lever	1	36	310-9A	Ratchet Pawl	1
14	696ZZ	Ball Bearing	1	37	310-24	Dowel Pin	1
15	312C-3	Rear Plate	1	38	310MT-2	Thrust Washer Spring	2
16	25-4	Roll Pin(2.5ø-4mm)	2	☆ 39	310-23	Thrust Washer for 1/4"Sq. Anvil	1
17	330-16	Rotor Blade	4	40	310-60	Retaining Ring	1
18	1091C-2	Rotor	1	41	310C-1	Crank Shaft	1
19	330-17	Cylinder	1	42	310-8	Drive Bushing	1
20	310-5	Front Plate	1	43	310-3	Yoke	1
21	15-6	Roll Pin(1.5ø-6mm)	1	44	310G-5B	Boot	1
22	608ZZ	Ball Bearing	1	★ 45	310MT-1	3/8" Sq. Anvil	1
23	310-21	Internal Gear	1	★ 46	310S-23	Thrust Washer for 3/8"Sq. Anvil	1