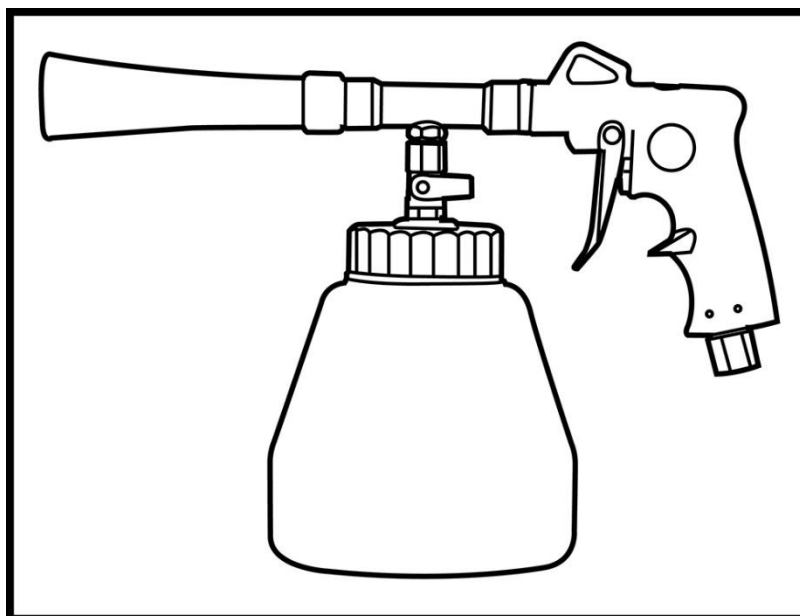




# SUMAKE PNEUMATIC TOOLS



## Air Twister Cleaning Gun (W/O Motor) (Plastic Cup) SA-4014

### Specification:

|                 |  |
|-----------------|--|
| Free Speed      | 6,000 r/min                            |
| Capacity        | 1000 cc                                |
| Overall Length  | 12.9" (310mm)                          |
| Air Consumption | 10 CFM (283 L/min)                     |
| Air Inlet (PT)  | 1/4" (6.35 mm)                         |
| Air Hose (I.D.) | 1/4" (6.35 mm)                         |
| Air Pressure    | 50-115 psi (3.5-8 kg/cm <sup>2</sup> ) |
| Net Weight      | 1.38 lbs (0.63 kg)                     |

### Noise and Vibration:

| Vibration<br>EN ISO 20643:2008  | Noise<br>EN ISO 15744              | Remark   |
|---|------------------------------------|--|
| No Load:<br>0.73 m/s <sup>2</sup><br><br>Uncertainty<br>K= 1.5 m/s <sup>2</sup> | Sound Pressure Level<br>: 98 dB(A) | Please always<br>wear ear<br>protector at<br>environment<br>noise level > 80<br>dB(A) due to<br>risk of impaired<br>hearing! |
|   | Sound power level<br>: 109 dB(A)   |  |
|   | Uncertainty<br>K= 3dB              |  |

## INSTRUCTION MANUAL

ITEM NO.: **SA-4014**  
**AIR TWISTER CLEANING GUN**  
**(W/O MOTOR) (PLASTIC CUP)**



## Replacing aluminum tube

1. Remove outer nozzle.



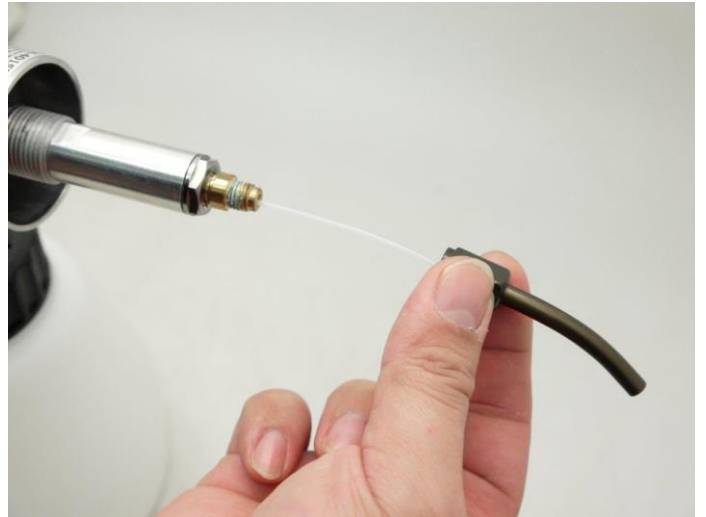
2. Anticlockwise to remove inner nozzle.



3. Use 9mm open wrench to hold lock nut, then anticlockwise to remove aluminum tube with 12mm open wrench.



4. Replace with new aluminum tube.



## Replacing Teflon tube

1. Remove outer nozzle.



2. Anticlockwise to remove inner nozzle.



3. Anticlockwise to remove the cup.



4. Anticlockwise to remove aluminum main body with 15mm open wrench.

**Note: Apply thread-lock adhesive before assembling.**



5. Fix housing on vise.



6. Anticlockwise to remove switch valve set with 14mm open wrench.

**Note: Apply thread-lock adhesive before assembling.**



7. Hold switch valve set with 14mm open wrench first, then anticlockwise to remove Teflon kit.

**Note: Warm up anaerobic adhesive before disassembling to make it softer.**



8. Assemble new Teflon kit.

**Note: Apply thread-lock adhesive before assembling.**

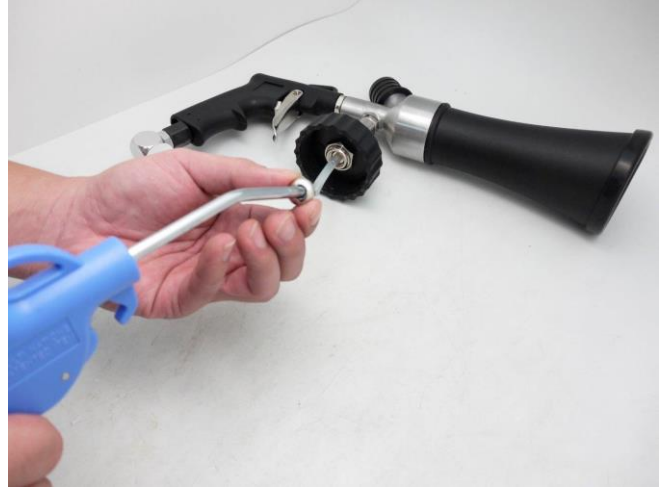


## Troubleshooting

1. When the aluminum tube does not rotate, spray some lubricant WD40 (other brands will do) into the air inlet.



2. When the twister does not aspirate any liquid, make sure to switch on the valve and blow air through the filter in the metal of the flexible tube.





## EC DECLARATION OF CONFORMITY

We: **SUMAKE INDUSTRIAL CO., LTD.**

**4F, No. 351, Yangguang St., Neihu District, Taipei City, Taiwan**

declare in sole responsibility that the equipment

Equipment : **AIR TWISTER CLEANING GUN**

Model/ Serial No. : **SA-4014**

to which this declaration applies, complies with these normative documents:

- Machinery Directive: 2006/42/EC

and conforms to the following EN standard,

- EN ISO 12100: 2010
- EN 1953: 2013

Name and Signature/Position



Mike Su - Managing Director

Date and Place

2022/12/1

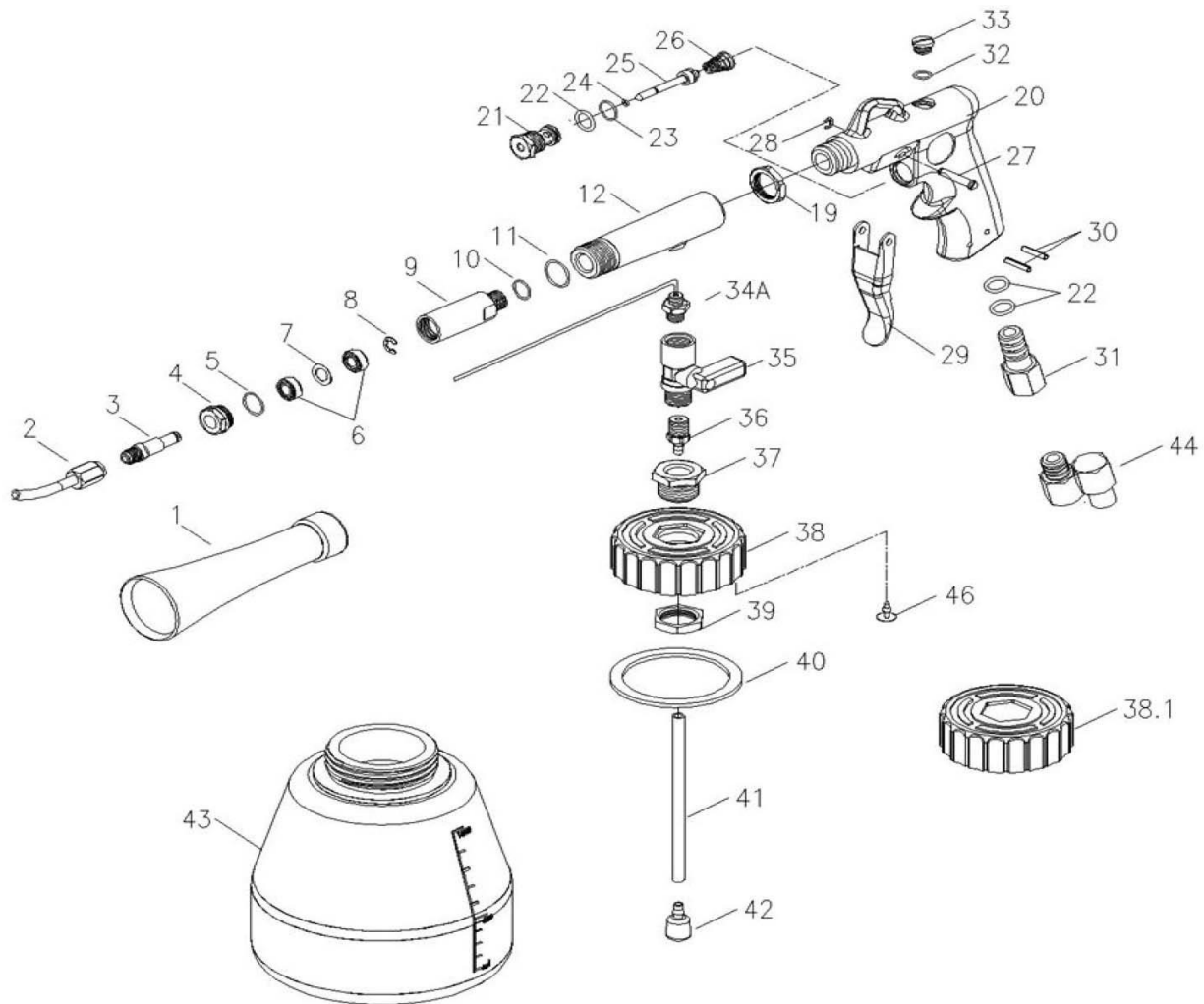
Taipei, Taiwan

SA-4014-D-2301B-G2F



# SA-4014

## AIR TWISTER CLEANING GUN (W/O MOTOR) (PLASTIC CUP)



### PARTS LIST

| No. | Parts No.  | Description            | Q'ty |
|-----|------------|------------------------|------|
| 1   | SA4015V-01 | Nozzle                 | 1    |
| 2   | SA4015V-02 | Aluminium Tube         | 1    |
| 3   | SA4015V-03 | Rotor                  | 1    |
| 4   | SA4015V-04 | Lock Nut               | 1    |
| 5   | SA4015V-05 | O-Ring                 | 1    |
| 6   | SA4015V-06 | Ball Bearing (S686 ZZ) | 2    |
| 7   | SA4015V-07 | SUS Washer             | 1    |
| 8   | SA4015V-08 | E-Ring (ETW-5)         | 1    |
| 9   | SA4015V-09 | Aluminium Main Body    | 1    |
| 10  | SA4015V-10 | O-Ring                 | 1    |
| 11  | SA4015V-11 | O-Ring                 | 1    |
| 12  | SA4015-12  | Controller Cap         | 1    |
| 19  | SA4015-19  | Nut                    | 1    |
| 20  | SA4015V-20 | Housing                | 1    |
| 21  | SA4015V-21 | Nut                    | 1    |
| 22  | SA4015V-22 | O-Ring                 | 3    |
| 23  | SA4015V-23 | O-Ring                 | 1    |
| 24  | SA4015V-24 | O-Ring                 | 1    |
| 25  | SA4015V-25 | Valve Stem             | 1    |
| 26  | SA4015V-26 | Spring                 | 1    |
| 27  | SA4015V-27 | Pin                    | 1    |

| No. | Parts No.    | Description         | Q'ty |
|-----|--------------|---------------------|------|
| 28  | SA4015V-28   | E-Ring (ETW-3)      | 1    |
| 29  | SA4015V-29   | Trigger             | 1    |
| 30  | SA4015V-30   | Spring Pin          | 2    |
| 31  | SA4015V-31A  | Air Inlet (PT19)    | 1    |
|     | SA4015V-31B  | Air Inlet (NPT18)   | 1    |
|     | SA4015V-31C  | Air Inlet (PS19)    | 1    |
| 32  | SA4015V-32   | O-Ring              | 1    |
| 33  | SA4015V-33   | Screw               | 1    |
| 34  | SA4015VC-34  | Teflon Kit          | 1    |
| 35  | SA4015VC-35  | Switch Valve Set    | 1    |
| 36  | SA4015VC-36  | Screw               | 1    |
| 37  | SA4015VC-37  | Screw               | 1    |
| 38  | SA4015VC-38  | Cap (A Hole)        | 1    |
| 38A | SA4015VC-38A | Cap (No Hole)       | 1    |
| 39  | SA4015VC-39  | Nut                 | 1    |
| 40  | SA4015VC-40  | Packing             | 1    |
| 41  | SA4015VC-41  | Tube                | 1    |
| 42  | SA4015VC-42  | Bushing             | 1    |
| 43  | SA4015-43    | Cup                 | 1    |
| 44  | SA4015V-44   | Air Universal Joint | 1    |
| 46  | SA4015VC-46  | Rubber              | 1    |