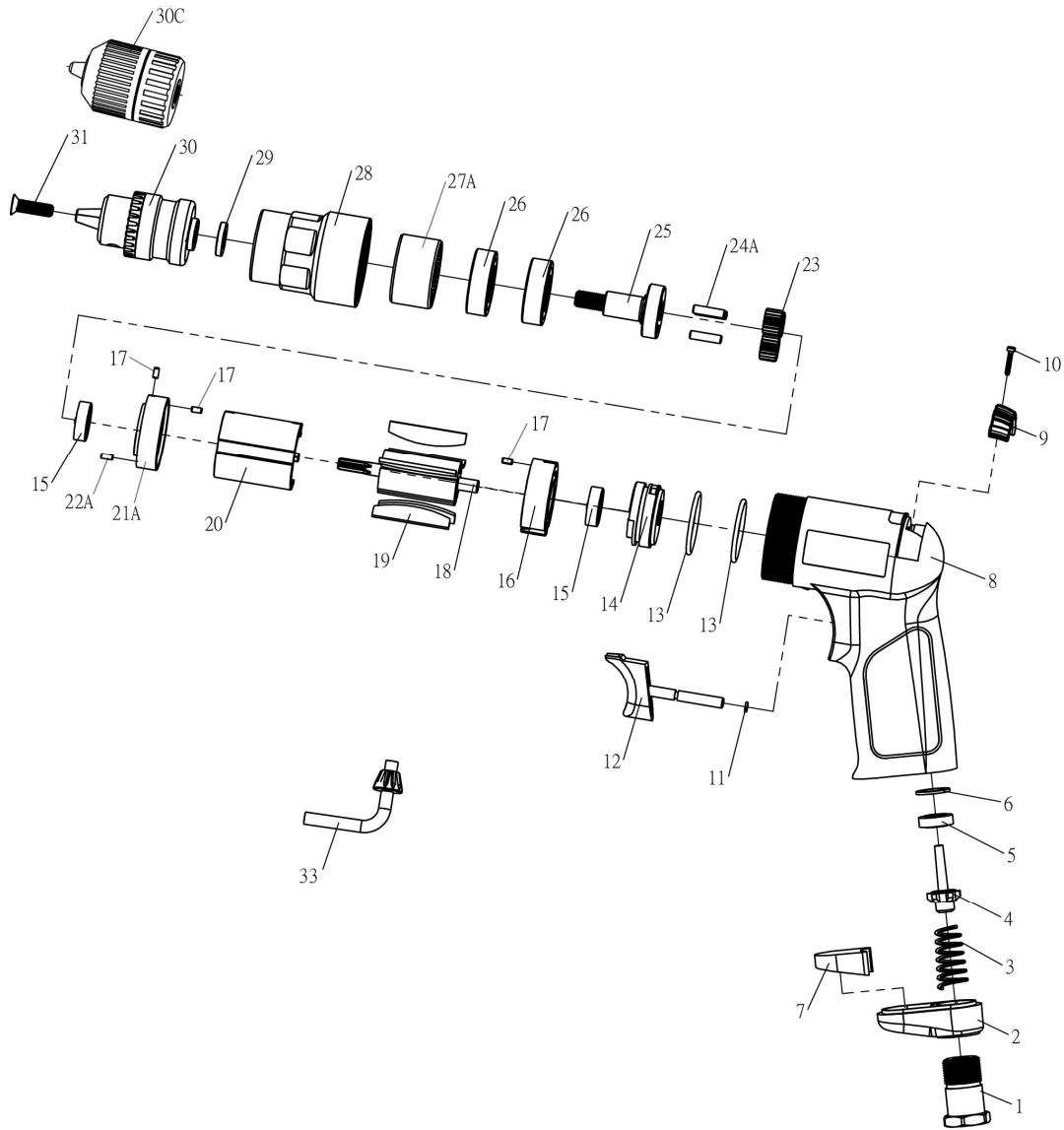


# ST-C110(C)

## 3/8" AIR REVERSIBLE DRILL (W/KEYLESS CHUCK)



### PARTS LIST

No.	Parts No.	Description	Q'ty
1	C110-01	Inlet Bushing	1
2	C110-02	Deflector	1
3	C110-03	Valve Spring	1
4	C110-04	Valve	1
5	C110-05	Valve Seat	1
6	C110-06	Spacer	1
7	C110-07	Silencer	1
8	C110-08	Composite Housing	1
9	C110-09	Reverse Valve Lever	1
10	C110-10	Taping Screw (Φ2.3x12L)	1
11	C110-11	O-Ring (3x1)	1
12	C110-12	Trigger	1
13	C110-13	O-Ring (27x2)	2
14	C110-14	Valve Body	1
15	C110-15	Bearing (626)	2
16	C110-16	Rear Plate	1
17	C110-17	Spring Pin (Φ2.5x5.0L)	3

No.	Parts No.	Description	Q'ty
18	C110-18	Rotor	1
19	C110-19	Rotor Blade	5
20	C110-20	Cylinder	1
21A	C110-21A	Front Plate	1
22A	C110-22A	Pin (Φ2.5x5.8L)	1
23	C110-23	Idle Gear	3
24A	C110-24A	Pin (Φ4x13.8)	3
25	C110-25	Spindle	1
26	C110-26	Ball Bearing (6201ZZ)	2
27A	C110-27A	Ring Gear	1
28	C110-28	Front Housing	1
29	C110-29	Chuck Spacer	1
30	C110-30	Drill Chuck [ST-C110]	1
	C110-30C	Keyless Chuck [ST-C110C]	1
31	C110-31	Screw (M5x20L)	1
33	C110-33	Key	1