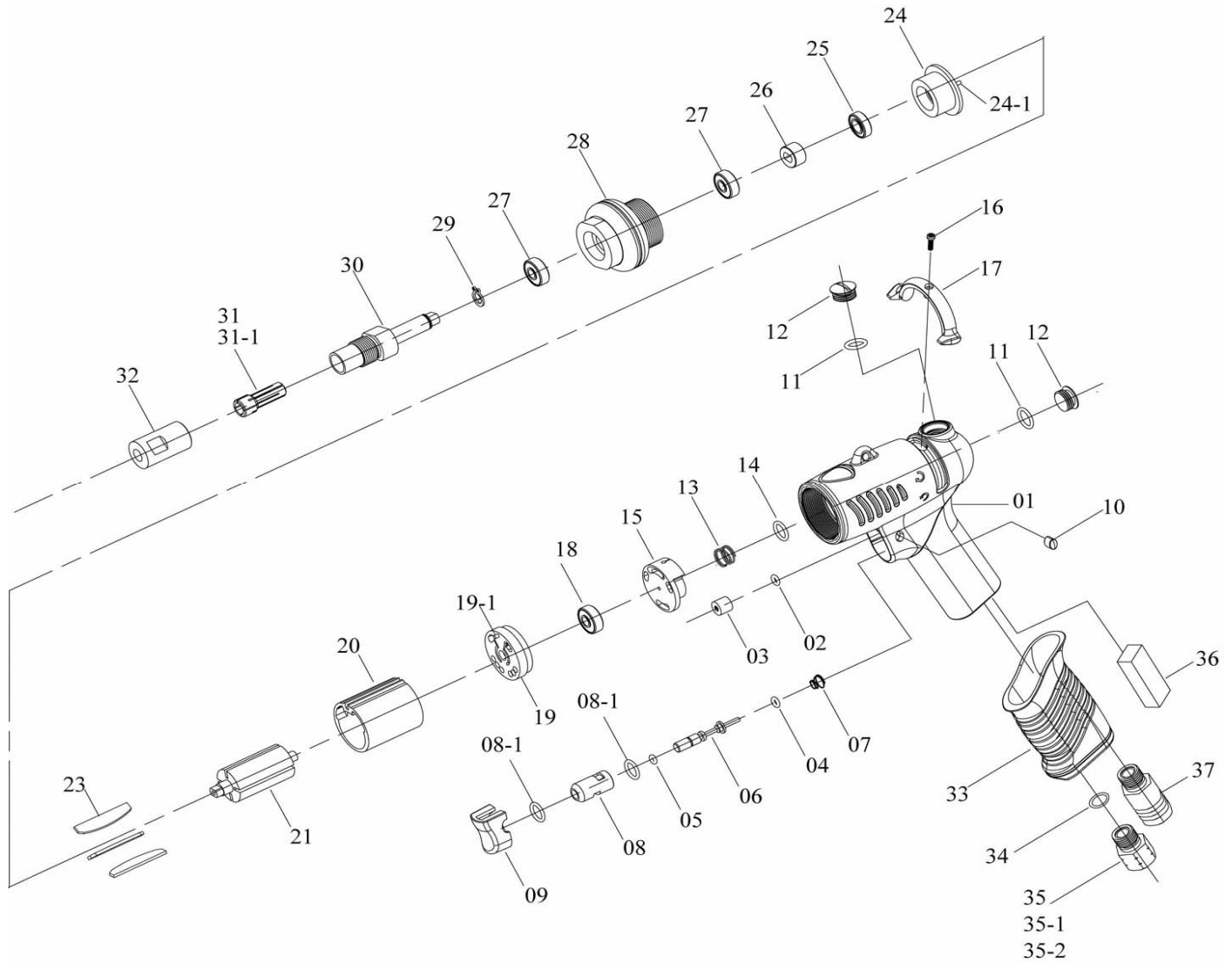


# CG25(M)

# 1/4" (6MM) PISTOL TYPE GRINDER



## PARTS LIST

No.	Parts No.	Description	Q'ty
1	5L2107	Pistol Housing	1
2	7Q2008	O Ring	1
3	2C2003-A	Blank Cap	1
4	7Q2006	O Ring	1
5	7Q6112	Valve O-Ring	1
6	6S2023	Valve Pin	1
7	6N2106	Cone Spring	1
8	6S2024	Valve Bushing	1
8-1	7Q2009	O Ring	2
9	5L2102	Button	1
10	5L2112	Cap	2
11	2Q5001	O Ring	2
12	2S2011	Screw Cap	2
13	6N2108	Spring	1
14	7Q2017	Valve O-Ring	1
15	6S2204	Valve	1
16	7S2107	Set Screw And Washer	1
17	5L2106	Switch	1
18	7S2001	Ball Bearing	1
19	1S3001-A	End Plate	1
19-1	6S2013	Pin	1

No.	Parts No.	Description	Q'ty
20	1P3005	Cylinder	1
21	1S3036	Rotor	1
23	1P3051-2	Blade	3
24	1P3062	Front Plate	1
24-1	6S2014	Pin	1
25	7S2002	Ball Bearing	1
26	1S3050	Connect	1
27	7S2002	Ball Bearing	2
28	5A6206	Housing Cap	1
29	6N2081	C Ring	1
30	1S3071	Connect	1
31	5N5503	6mm Collet	1
31-1	5N5504	1/4" Collet	1
32	5S5007	Nut	1
33	5L3206	Pistol Cover	1
34	2Q5001	O Ring	1
35	2S2005	Air Inlet Bushing [PT]	1
35-1	2S2008	Air Inlet Bushing [PS]	1
35-2	2S2006	Air Inlet Bushing [NPT]	1
36	2P3040	First Silencer	1
37	2P3041	Second Silencer	1